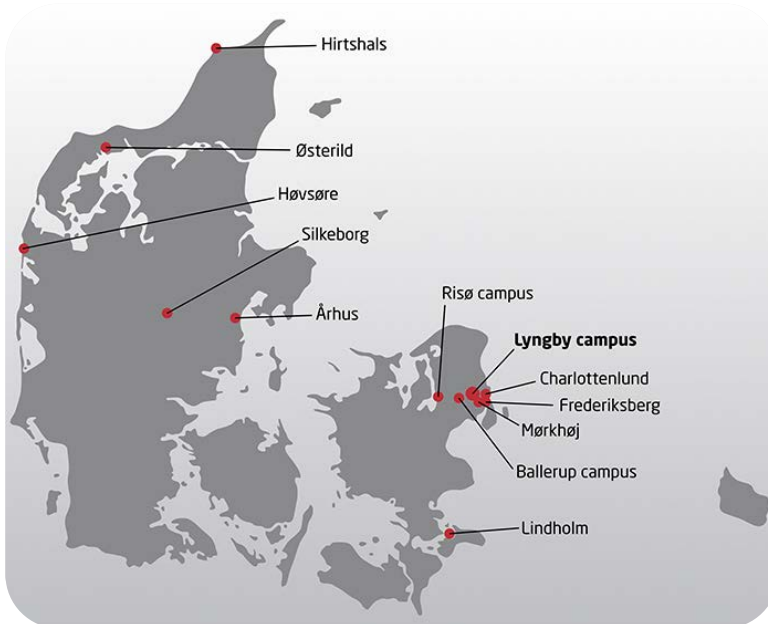


A future lifecycle of building data will need to include and integrate components that stem from operational systems - such as Facility Management Software - as original BIM data.

- **DTU** – general information
- **FM tasks** - Illustrated by the Facility Management Spiral
- **BIM strategy** - BIMkontor in Building Management Systems
Where do we come from and where do we want to go?
- **Everyday business** - BIMkontor - information flow, dataset and processes



Key Figures (2013)

Number of students	ca. 8,500
here of Ph.D. Stud.	1,200
Science staff	1,700
Publications	3,600

Ranking

Leiden *Crown Indicator* 2010:

No. 1 in Scandinavia

No. 7 in Europe



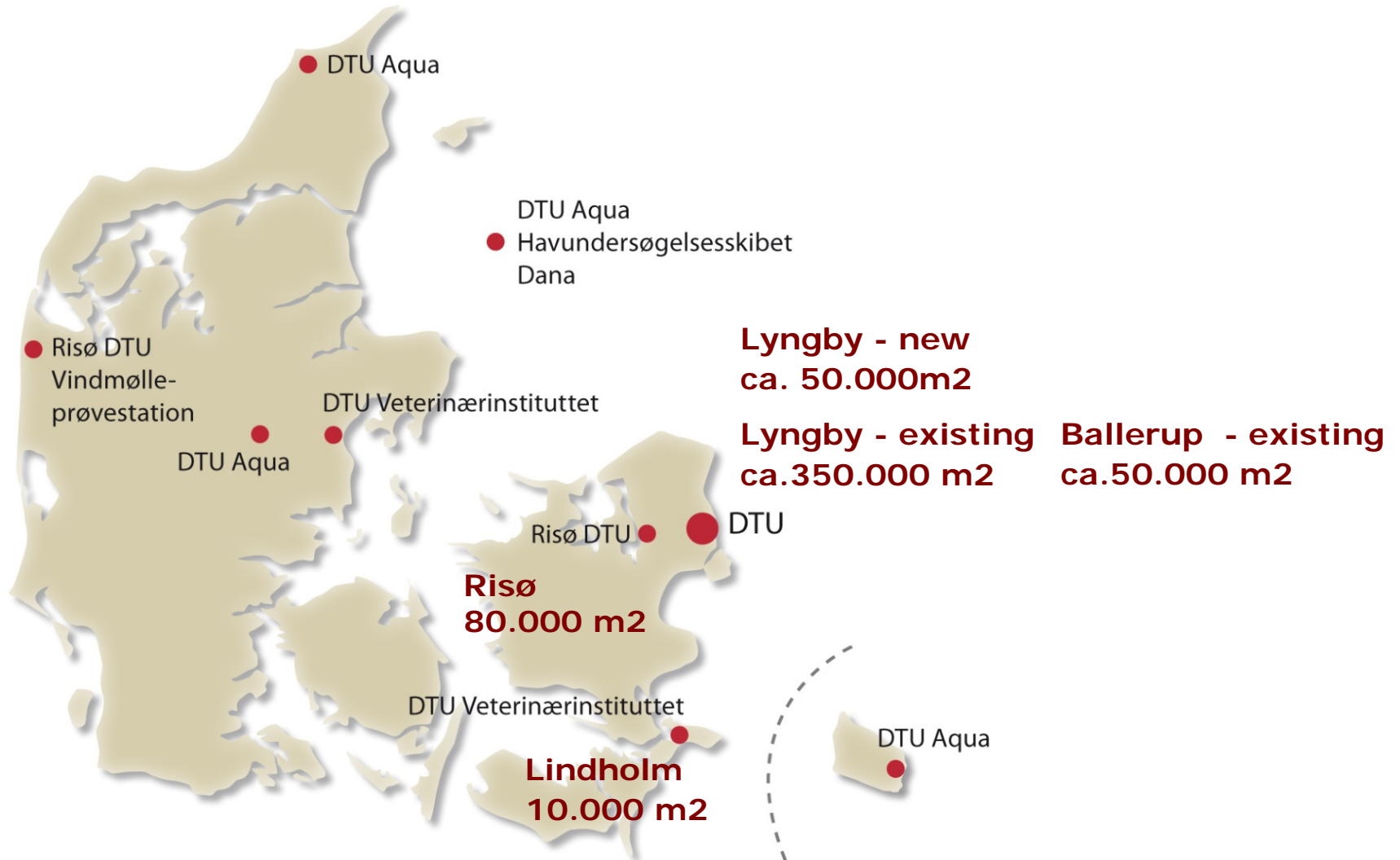
FACTS about DTU

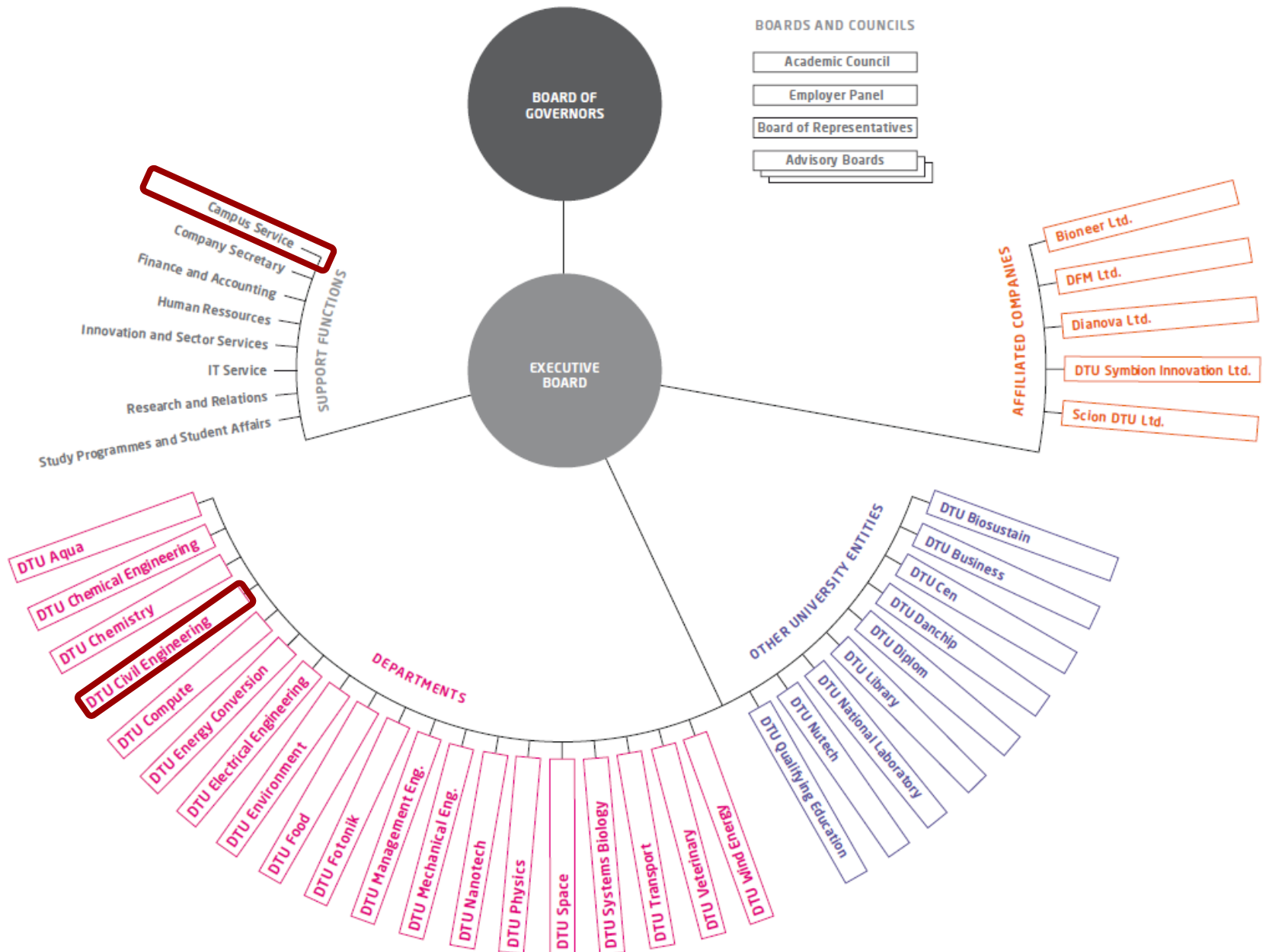


FACTS about DTU



600.000m² and 9 locations

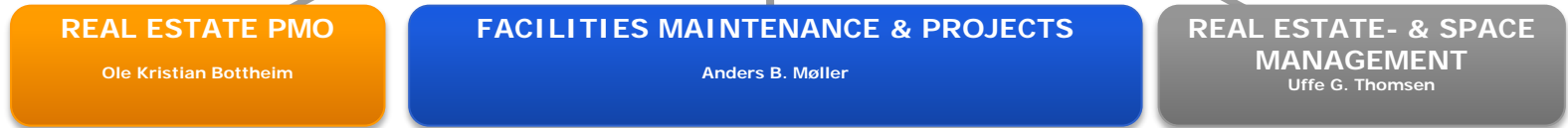






DTU - CAMPUS SERVICES

Jacob Steen Møller



LYNGBY

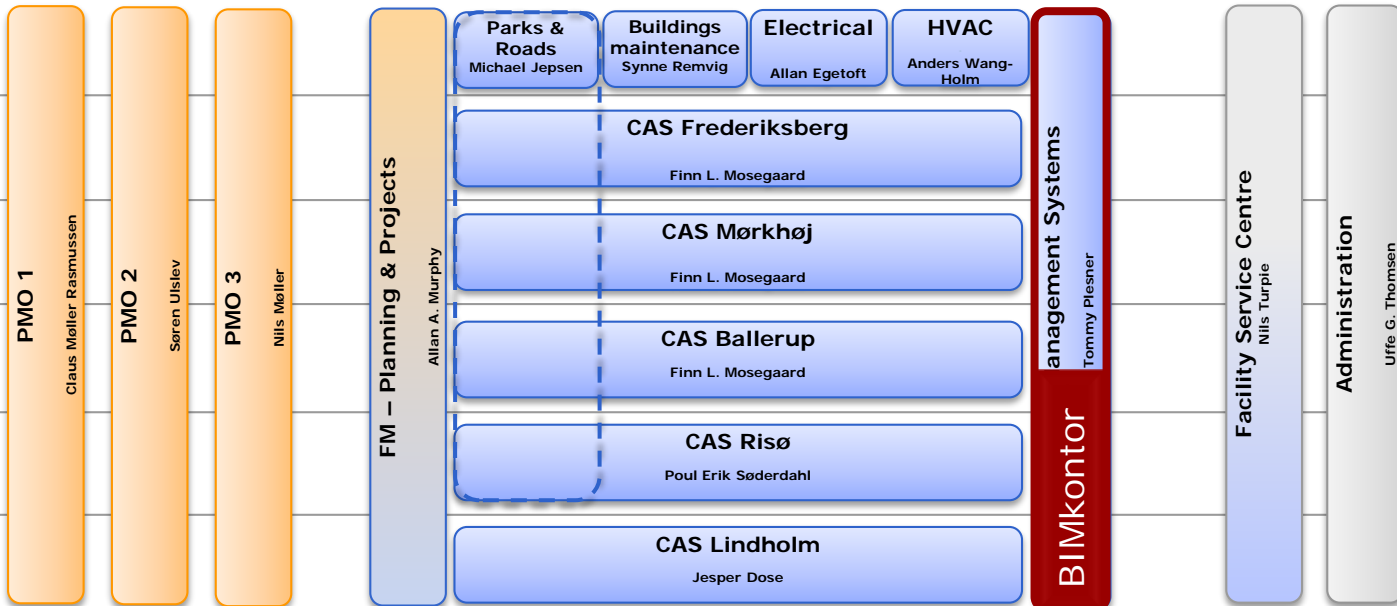
FREDERIKSBERG

MØRKHØJ

BALLERUP

RISØ

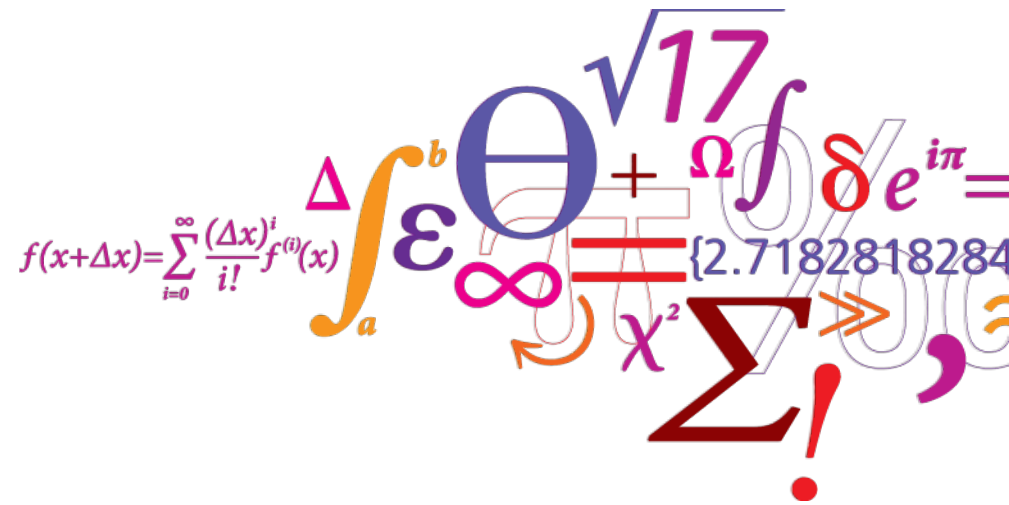
LINDHOLM



— Professional Responsibility

Campus Service - Tasks

Illustrated by the Facility Management Spiral

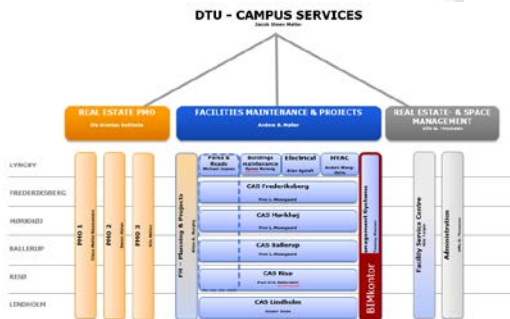


Portfolio Management (Property)

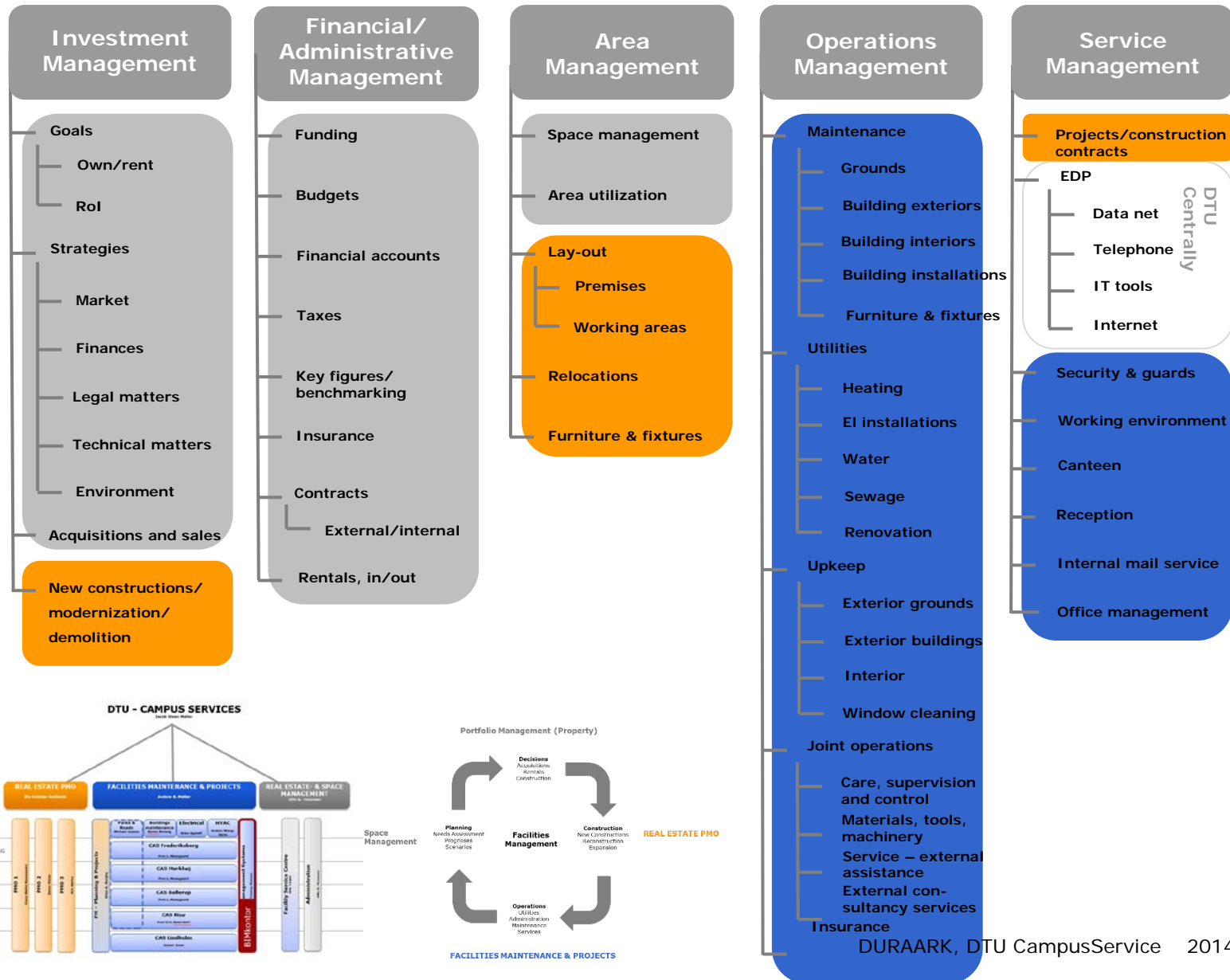


Space Management

FACILITIES MAINTENANCE & PROJECTS

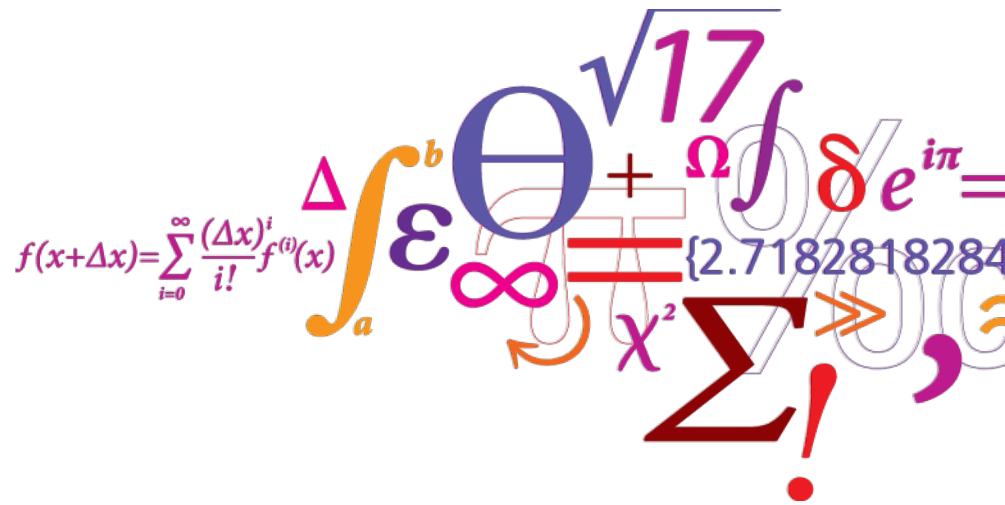


CAS TASK OVERVIEW



Campus Service – BIM strategy

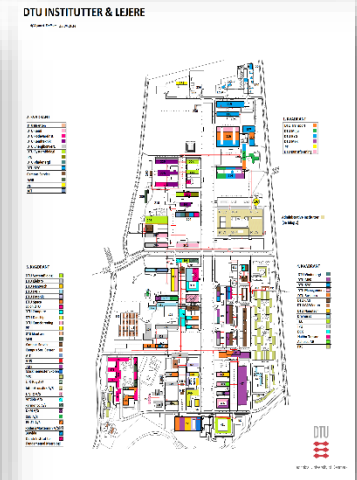
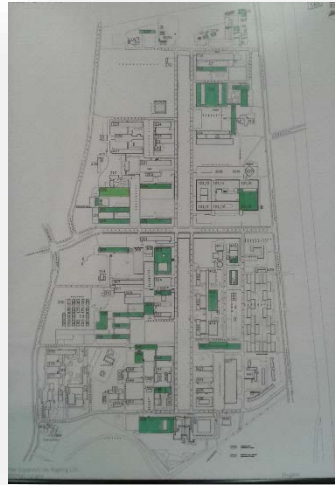
BIMkontor in Building Management Systems



DTU, Lyngby Campus



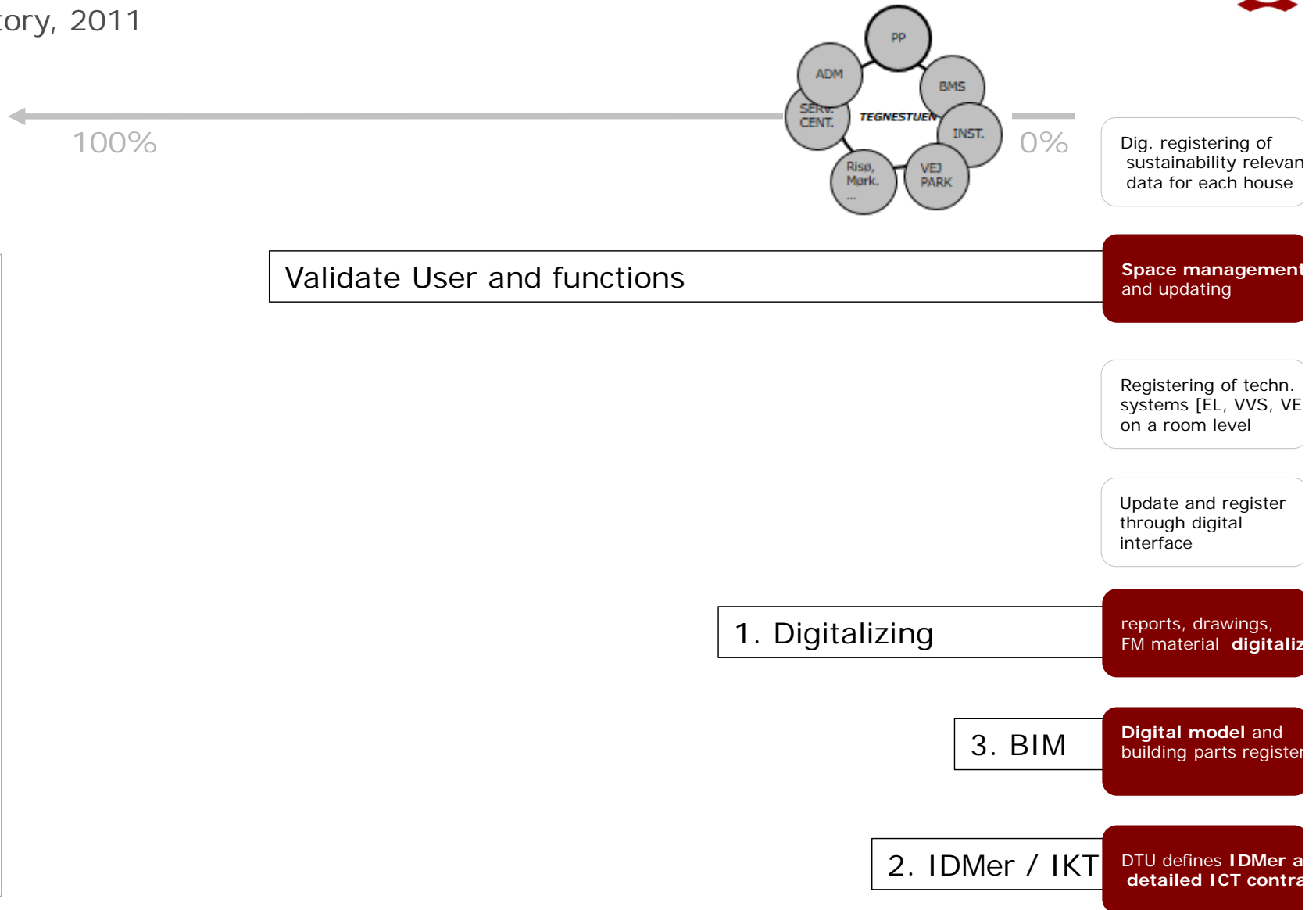
GIS...



Building Informations in the DTU



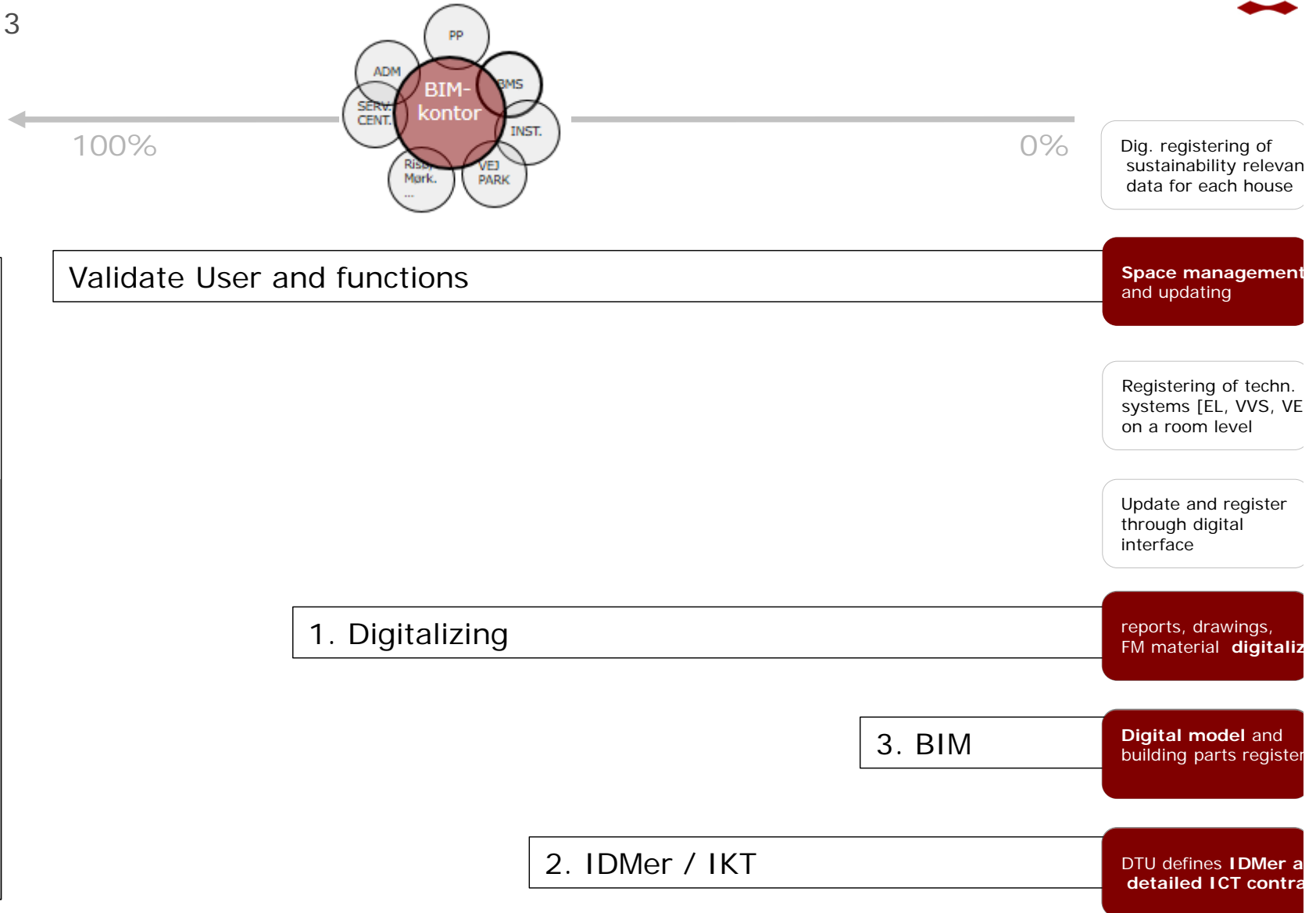
History, 2011



Building Informations in the DTU



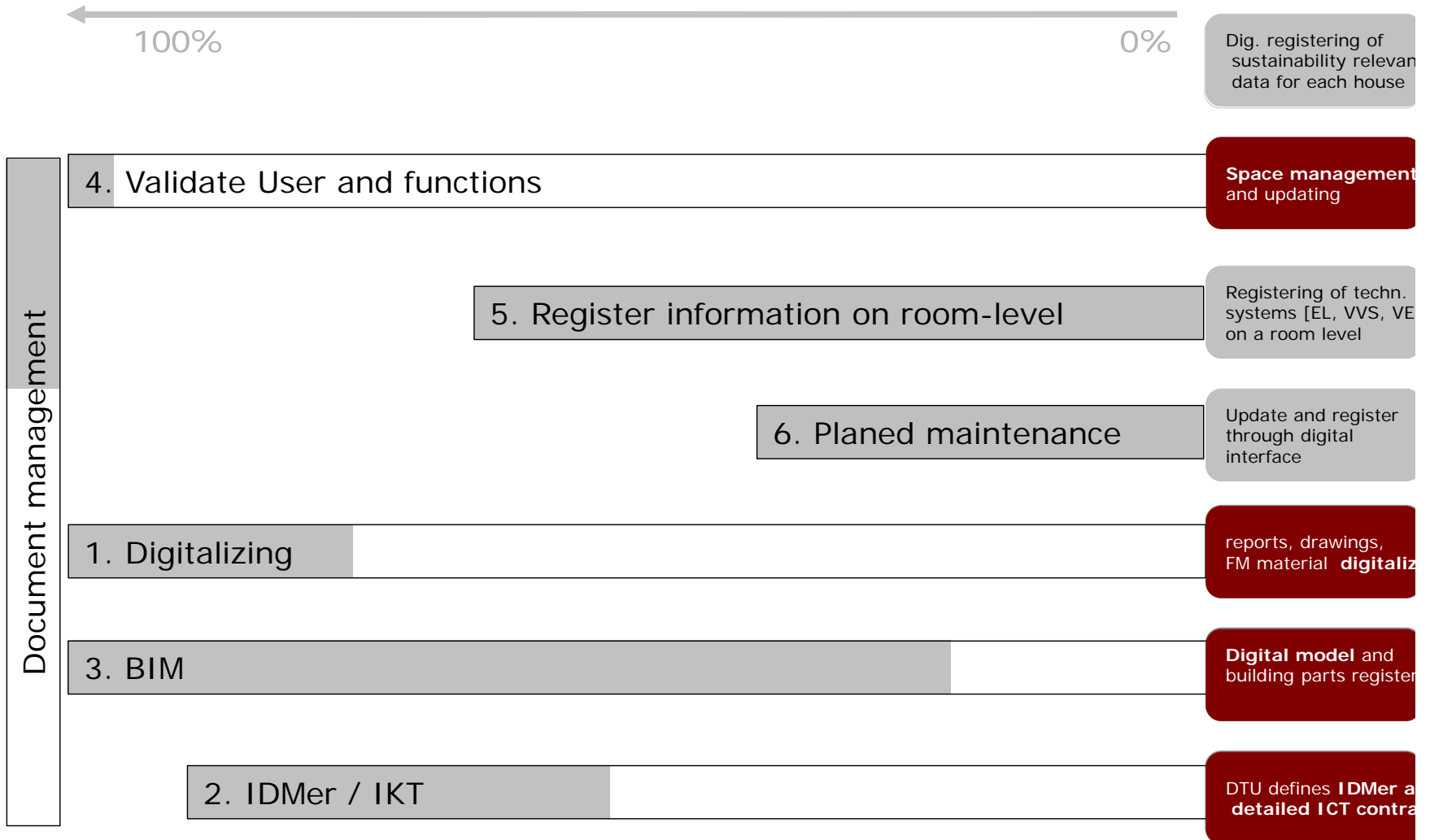
2013



Building Informations in the DTU



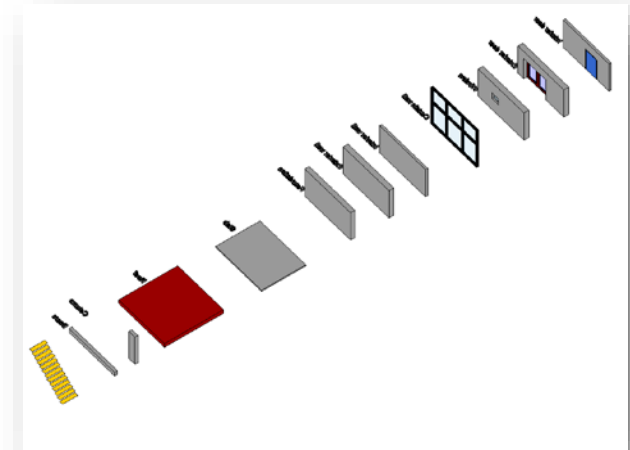
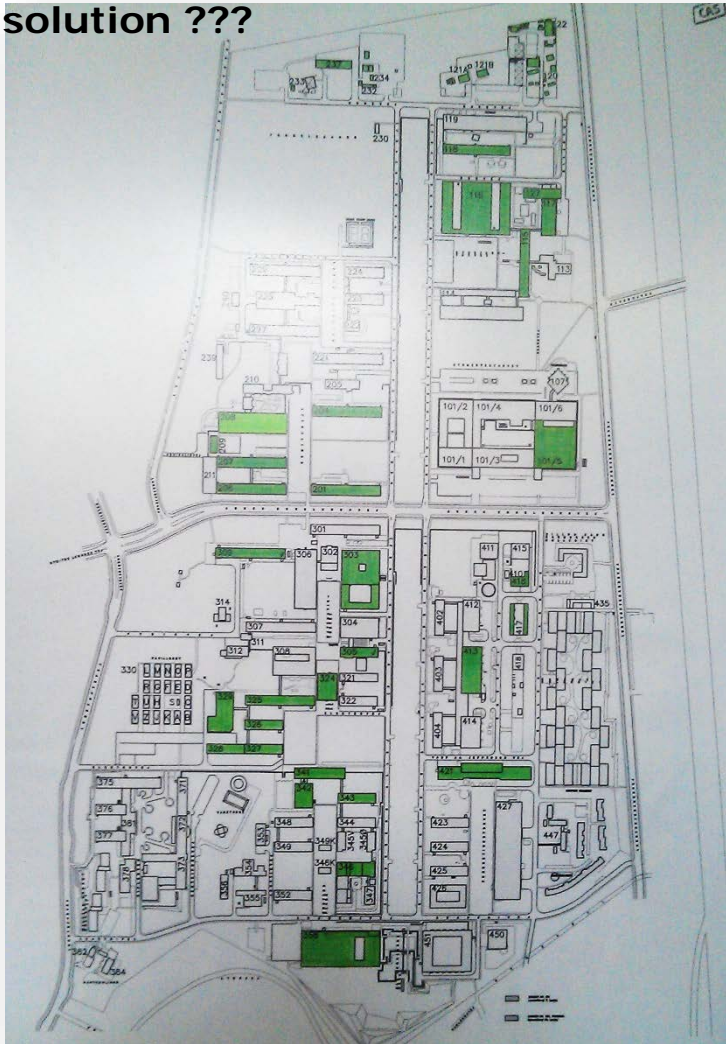
Vision, 2016



Digitalization an prioritization

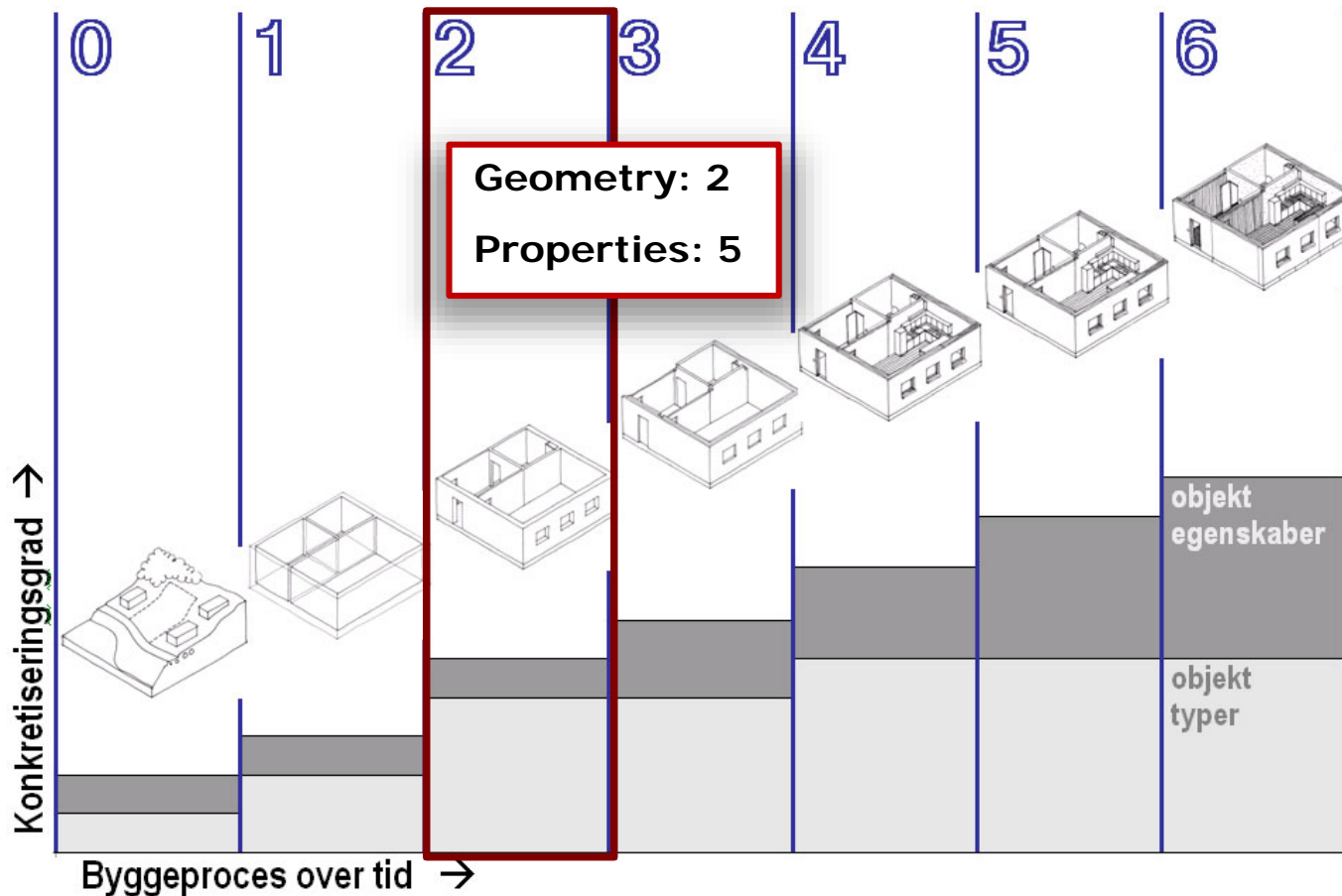
What's first?

solution ???



DTU strategy – from paper to BIM

FM-BIM: Information levels

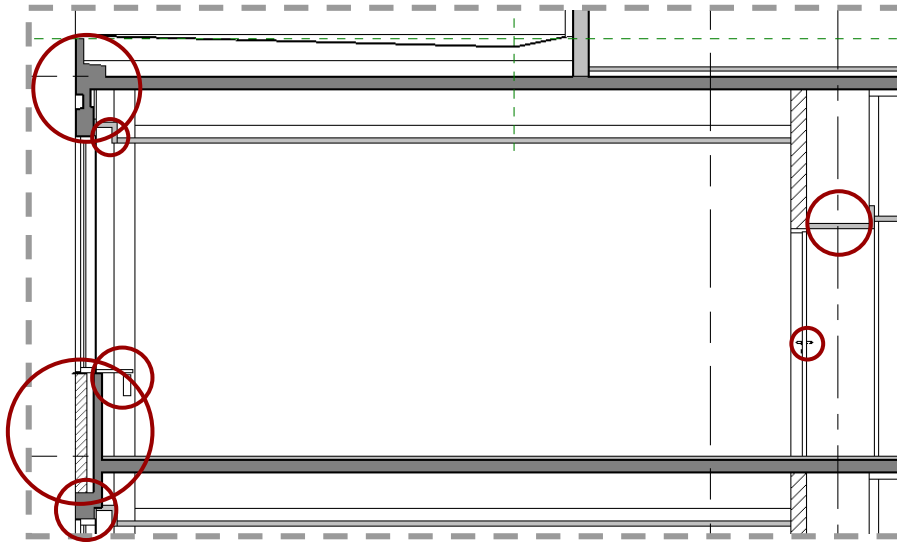


Figur 8: Informationsniveauerne fra 0 til 6 placeret i forhold til et traditionelt faseforløb som eksempel.

[DDB, informationsniveauer]

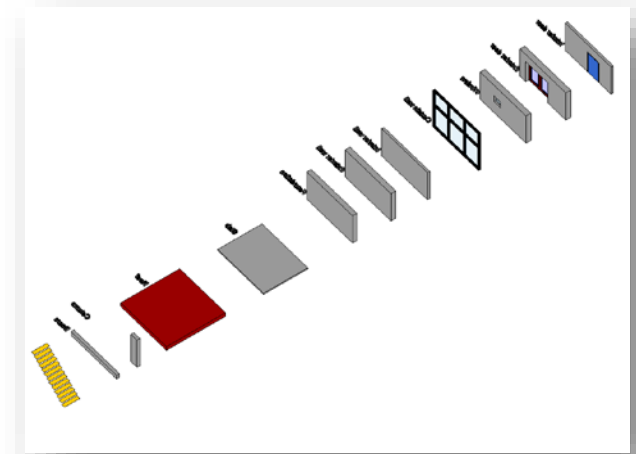
DTU strategy – from paper to BIM

FM-BIM: Information level 2 for building elements

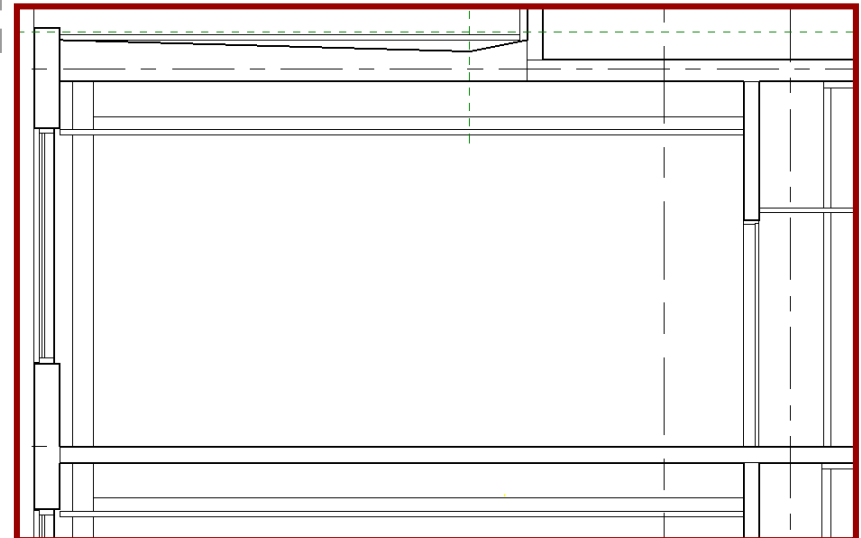


'Over-' detailed

Overdetaljeret

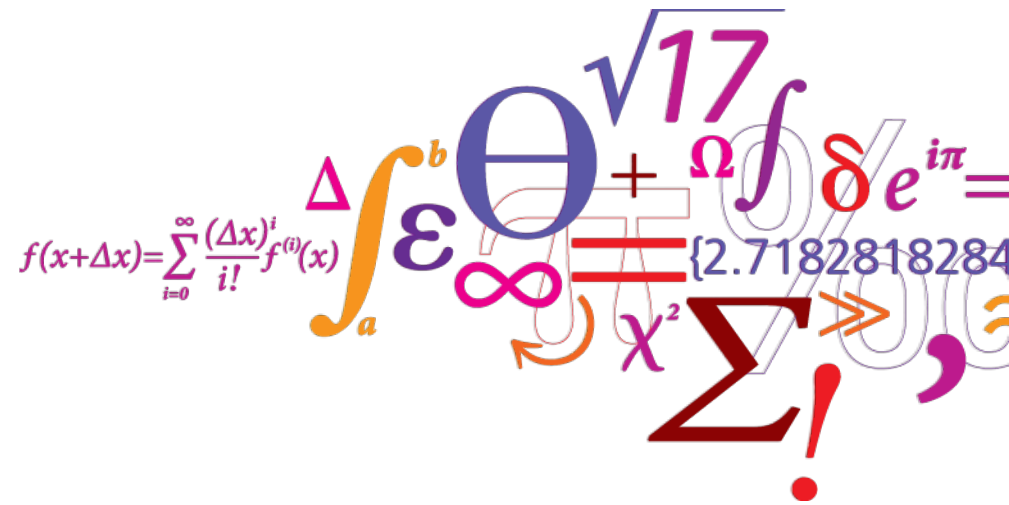


Needed level for FM



Campus Service – in everyday business

BIMkontor - information flow, dataset and processes



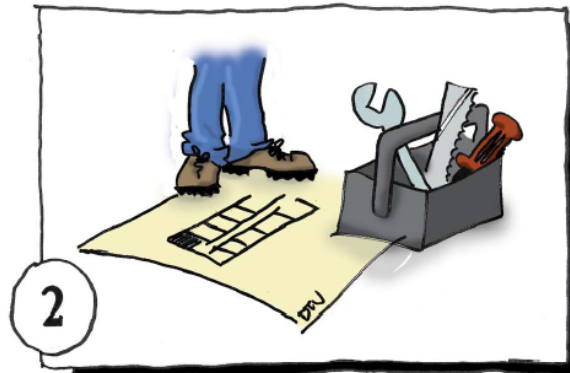
Update of smal changes

2D & dokumenter in real life

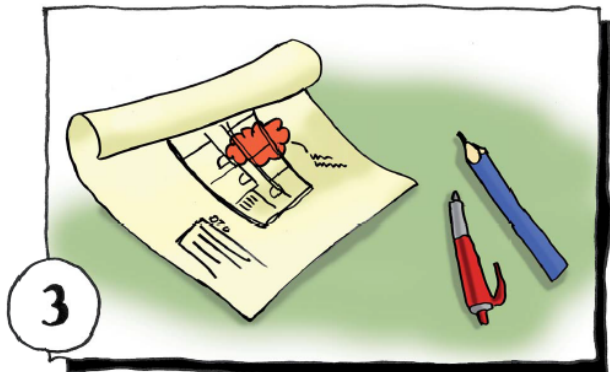
LÅN AF TEGNINGER



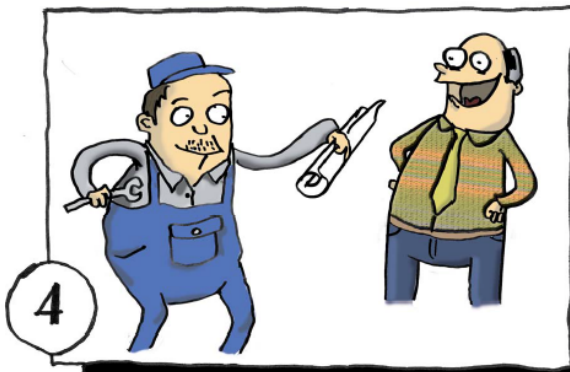
Hent den tegning du skal bruge på <http://bim.cas.dtu.dk>.



Medbring tegningen, der hen hvor du har brug for den.



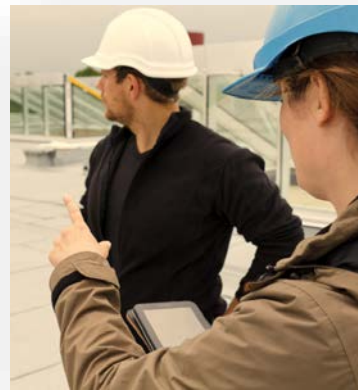
Skitsér eller notér rettelserne du har lavet på tegningen.
Husk: Rettelser, dato og dit navn.



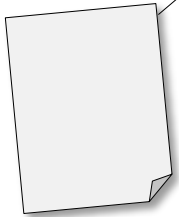
Afllever tegningen med rettelser til BIM-Kontoret.

Challenge: Information sources

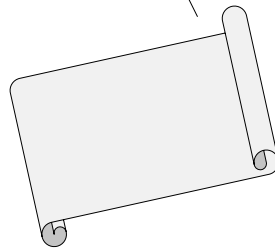
2D & documents: Different formats for one older building



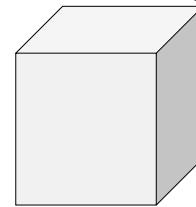
WORD



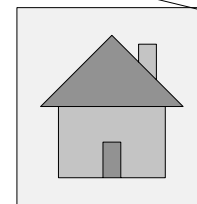
TIF



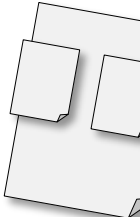
CAD



RVT



PDF



SEP

Credibility and accuracy

Illustration for information accuracy and state

Modellen overdrages til Bygherre som "As built" materiale.
Tilbygning / Nybygning er i overdragelsen

4. Værdiliste for Informationsnøjagtighed (Information accuracy) (ikke fra A104)

Kode som angiver nøjagtigheden for et givet objektets geometri.

Informationsnøjagtighed er et obligatorisk metadataelement. Værdierne i listen er bundne og må ikke afviges.

Eksisterend
Author: BH

Nærværende liste anvendes også i dokumentationsmodul for tegninger (Kvalitetssikringsniveau).

PHASING

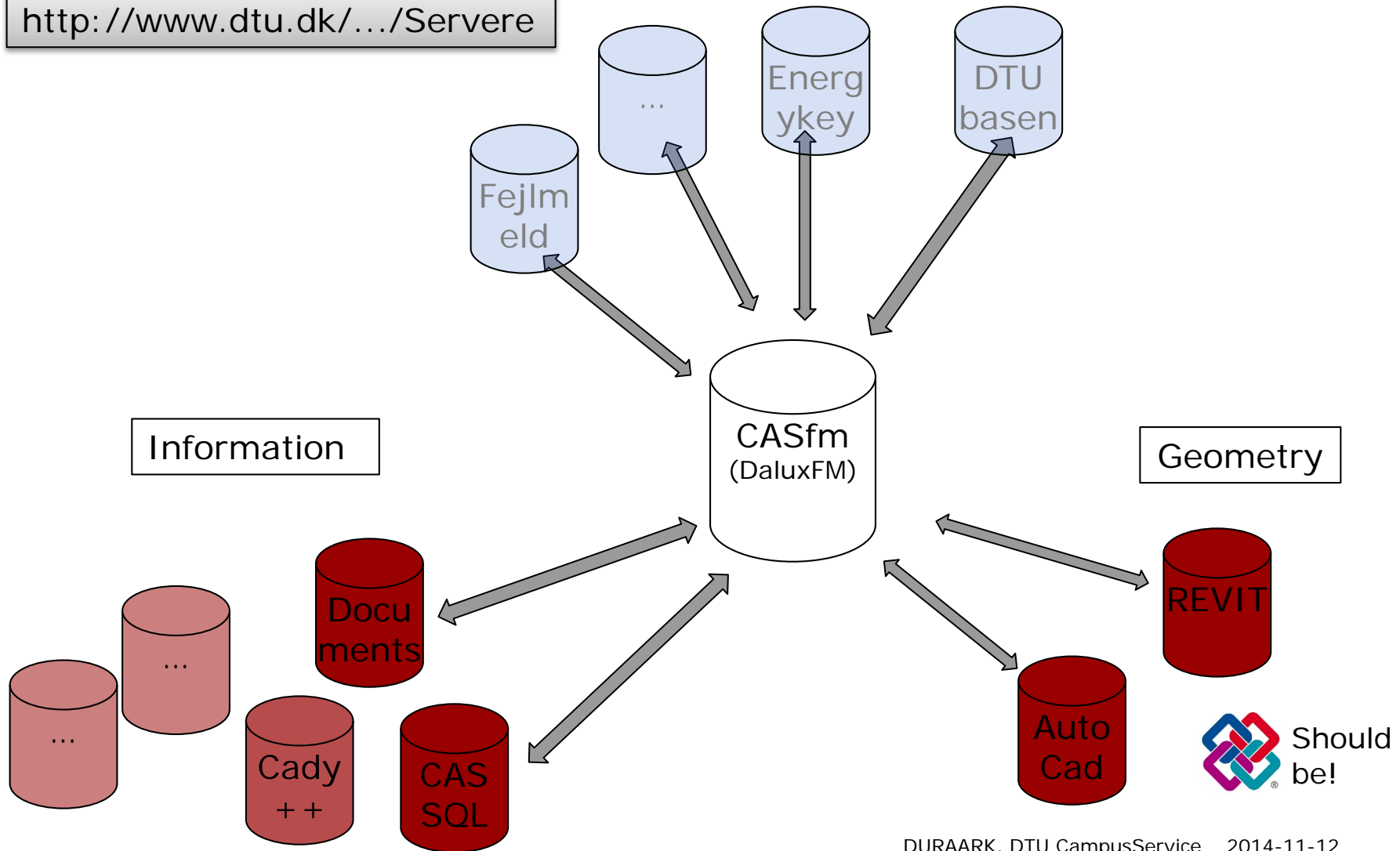


Metadataværdi	Metadataværdi	Værdi	Definition	Eksempler
DK	EN	Kode		
Informationsnøjagtighed 0	Information accuracy 0	JA0	Objekt dannet ud fra en opmåling af analogt tegningsgrundlag.	Anvendes hvor objektet er oprettet direkte ud fra et scannet grundlag
Informationsnøjagtighed 1	Information accuracy 1	JA1	Objekt dannet på baggrund af overordnet kontrol af bygningsdeles indbyrdes placering på stedet. Objektet er ikke opmålt.	Anvendes hvor objektet er tjekket visuelt, men ikke opmålt, på pladsen. For eksempel ruminddeling eller vinduesplacering.
Informationsnøjagtighed 2	Information accuracy 2	JA2	Objektet er dannet på baggrund af gældende projekteringsgrundlag.	Anvendes for objekter ændret eller tilføjet i forbindelse med projekteringen.

DTU strategy – from paper to BIM

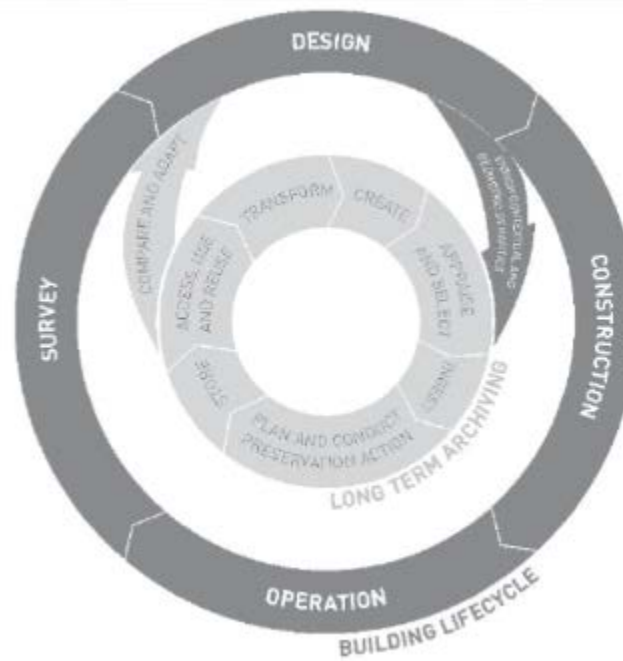
Digital information flow: Structures data and different viewer

<http://www.dtu.dk/.../Servere>

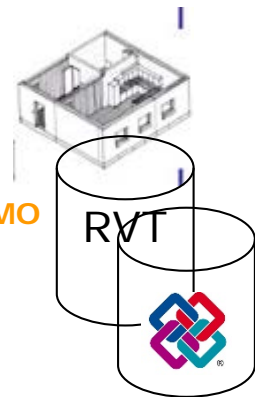


Portfolio Management (Property)

Space
Management



REAL ESTATE PMO



FACILITIES MAINTENANCE & PROJECTS

Important questions for longterm FM



What is creating value?

- Who is **interested (to update)** information? Need to know and nice to know.
- How to **link the different formats**, which capture information?
- Is there really a **need for a high level detailed information** for building parts in the everyday FM business?
- How to always update the information about the **credibility and accuracy** of the information?
- How to **motivate clients to use open formats**, like e.g. IF properties?
- Is it important to **find and document the processes** for working with information?